



Look What I Can Do

Early Intervention For Young Children With Developmental Delays

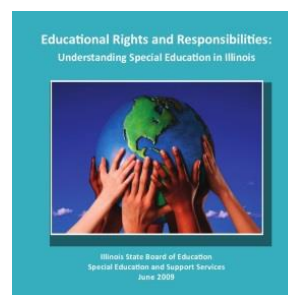
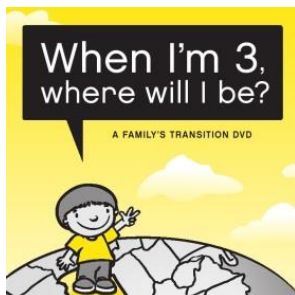
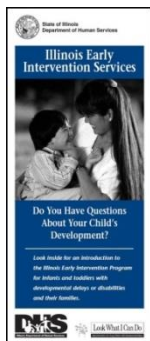
WHAT IS CHILD FIND & WHY DO I NEED TO KNOW ABOUT IT??

As an early childhood professional, you have such an important role with families. Not only are you educating and caring for young children, but you are also talking with families about their child's development and helping to link families with services that might help their child develop. The goal of the Child Find Project is to educate the public about the importance of early intervention and early childhood special education services for eligible children as early as possible in their development.

The Illinois Child Find website includes contact information for:

A listing of all ILLINOIS STATE AGENCIES that provide funding for early childhood programs through ISBE (Illinois State Board of Education) & DHS (Department of Human Services) can be found at <http://www.childfind-idea-il.us/ILStAgencies.aspx>

- IL Early Intervention Child & Family Connections for families that have a baby or toddler under the age of 3 with developmental delays or disabilities or who meet the defined at risk criteria. You can find your local office by county by clicking here. <http://www.childfind-idea-il.us/CFC.aspx>
- School District Early Childhood Services for children under the age of 5. Find your local school district and the programs it offers by clicking here. <http://www.isbe.net/earlychi/html/directories.htm>
- For a listing of other early childhood programs in ILLINOIS, including Early Head Start and Head Start (EHS/HS), Division of Specialized Care for Children (DSCC) & Division of Children & Family Services (DCFS) in ILLINOIS, click here. <http://www.childfind-idea-il.us/Resources.aspx>



To learn more about these programs & who to contact in your local area & to order FREE developmental growth charts & other materials for the families you serve, please visit the [Illinois Child Find](http://www.childfind-idea-il.us) website at

<http://www.childfind-idea-il.us> or contact:

Child Find - Kathy Hill, Project Coordinator

Toll Free: (800) 851-6197 Local: (618) 253-5581 Fax: (618) 252-8472

The goal of the Child Find Project is to educate the public about the importance of early intervention and early childhood special education services for eligible children as early as possible in their development.

To contact the Child & Family Connections office in your county see the 2013-2014 listing below:

| | |
|---|---|
| <p>Child & Family Connections #20 ARC Community Support Systems 1901 S. 4th St., Suite 209 Effingham, IL. 62401</p> <p>217/347-5601 Fax: 217/347-5119 Toll Free #: 888/459-5437</p> | <p>Bond Christian Clay Crawford Effingham Fayette Jasper Lawrence Macoupin Montgomery Richland</p> |
| <p>Child & Family Connections #21 Regional Office of Education #13 4 Eagle Center, Suite 4 O’Fallon, IL 62269</p> <p>618/622-6581 Fax: 618/622-8662 Toll Free #: 888/594-8364</p> | <p>Madison Monroe Randolph St. Clair</p> |
| <p>Child & Family Connections #22 Regional Office of Education #13 101 S. Lincoln Blvd. Centralia, IL 62801</p> <p>618/532-4919 Fax: 618/532-0856 Toll Free #: 800/661-0900</p> | <p>Clinton Franklin Jefferson Marion Washington Williamson</p> |

Don’t see your county? Find your local office by county by clicking here. <http://www.childfind-idea-il.us/CFC.aspx>

[IL Early Intervention Child & Family Connections](#) is for families that have a child under the age of 3 who meet one of the following eligibility criteria:

1. A developmental delay of 30% or more, **or**
2. Have a physician’s diagnosis of a condition that causes a developmental delay, **or**
3. Be at risk of substantial developmental delay because of certain risk factors such as a parent who has documentation of a medically diagnosed developmental disability or severe mental illness **OR** three or more of the following:

- current alcohol or substance abuse by the primary caregiver;
- primary caregiver who is currently less than 15 years of age;
- current homelessness of the child;
- chronic illness of the primary caregiver;
- alcohol or substance abuse by the mother during pregnancy with the child;
- primary caregiver with a level of education equal to or less than the 10th grade, unless that level is appropriate to the primary caregiver’s age;
- an indicated case of abuse or neglect regarding the child and the child has not been removed from the abuse or neglect circumstances.